

Indy Line

54

R4

PUNTI DI FORZA IN BREVE:

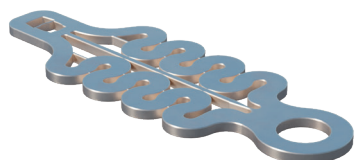
Fune in acciaio inox a 133 fili

- Compreso di doppio dissipatore di energia
- Installazione semplice e veloce
- Campata singola max. 20 m
campata multipla max. 10 m

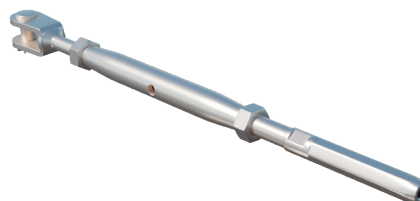
Caratteristiche:



Certificazioni:



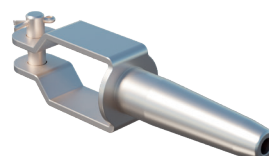
Damper assorbitore di energia
Art. **03IND101**



Tighter tenditore a forcella
Art. **03IND102**



Rope fune in acciaio inox 7x19 fili - \varnothing 8 mm
Art. **03IND100**



Faster terminale a forcella
Art. **03IND103**



SI pass sistema intermedio passante
Art. **03IND105**



Indy Line Slider navetta per sistema passante
Art. **03IND110**