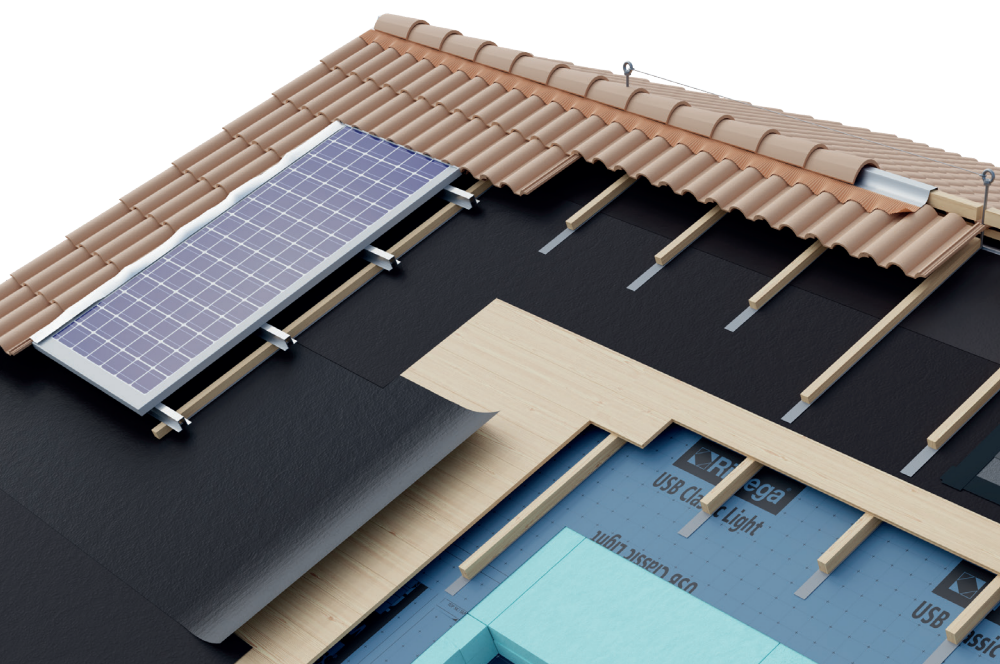


# Coll Solar



46  
R3

## QUICK OVERVIEW: STRENGTHS

### The ideal one for integrated photovoltaic panels

- Self-adhesive bituminous strip
- Ideal under rear-ventilated photovoltaic systems
- Can be applied "cold", a simple and quick application
- Antislip, excellent puncture resistance
- High resistance to atmospheric agents and ageing

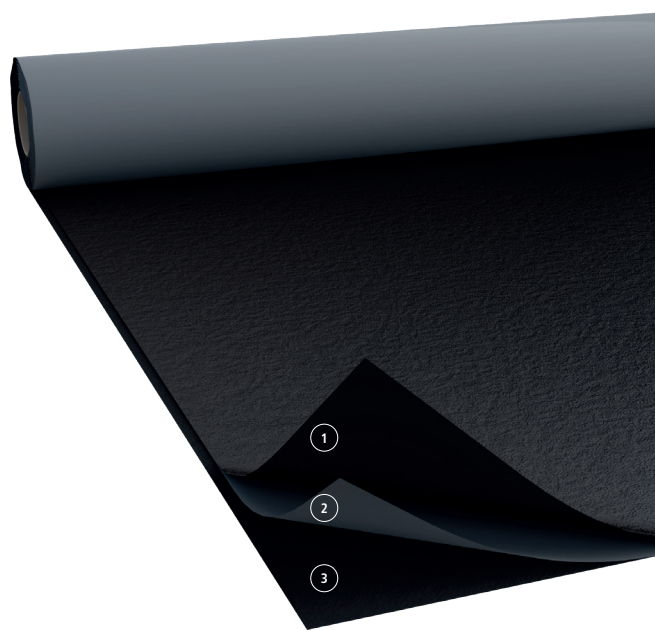
### Features:



### Classification:



Technical data sheet		
Glue		<b>bitumen</b>
Glue carrier material		<b>aluminium</b>
Thickness	EN 1849-1	<b>1,2 mm</b>
Tensile strength MD/CD*	EN 12311-1	<b>180 / 190 N/50mm</b>
Elongation at break MD/CD*	EN 12311-1	<b>20 / 30 %</b>
Tear resistance MD/CD*	EN 12310-1	<b>45 / 40 N</b>
Static load resistance met. A/B	EN 12730	<b>15 / 20 kg</b>
Peel resistance	EN 12316-1	<b>20 N/50mm</b>
Shear resistance MD/CD*	EN 12317-1	<b>190 / 210 N/50mm</b>
Water tightness (≥60 kPa)	EN 1928	<b>passed</b>
Sd value		<b>≥1500 m</b>
Working temperature		<b>+5°C / +45°C</b>
Operating temperature		<b>-40°C / +80°C</b>
Fire class	DIN 4102	<b>B2</b>
	EN 13501-1	<b>E</b>
Storage place		<b>dry, protected from UV rays, +5°C / +40°C</b>
Storage period		<b>max. 12 months</b>



### Composition:

- Non-slip-embossed aluminium film ①
- Bituminous compound ②
- Protection liner ③

### Codes and measures

Version	Code	Measures (m)	Box (pc)	Pallet (box)
Coll Solar	02044501	1x25	1	26

\*MD = longitudinal CD = transversal

Riwega Srl is not responsible for negligent and improper use of its products