

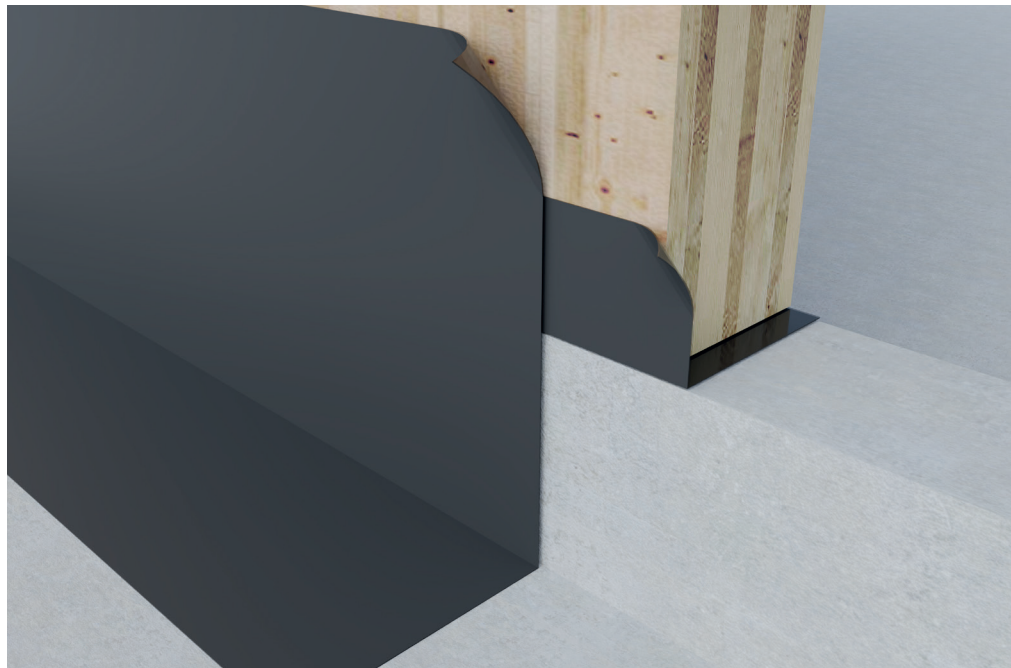
# Coll HDPE

39  
R3

## QUICK OVERVIEW: STRENGTHS

### The best mechanical resistance

- Self-adhesive bituminous strip
- Designed to waterproof the connection point of the wooden wall and as an anticorrosive covering
- Can be applied "cold", a simple and quick application
- Excellent mechanical resistance against mechanical stress
- Optimum dielectric strength and high deformability



new  
product



### Composition:

- ① HDPE film
- ② Bituminous compound
- ③ Silicone liner

### Codes and measures

Version	Code	Measures (mmxm)	Box (pc)	Pallet (box)
Coll HDPE 250	020445031	250x20	2	40
Coll HDPE 500	02044503	500x20	1	40
Coll HDPE 1000	020445032	1000x20	1	25

### Features:



### Classification:



### Technical data sheet

Glue		bitumen
Glue carrier material		HDPE
Protection liner		YES
Thickness		1,5 mm
Water vapour permeability $\mu$	EN 1931	90000
Tensile strength MD/CD*	EN 12311-1	215 / 220 N/50mm
Elongation at break MD/CD*	EN 12311-1	310 / 240 %
Tear resistance MD/CD*	EN 12310-1	135 / 135 N
Static load resistance Met. A/B	EN 12730	10 / 15 kg
Adhesion (to concrete at 23°C)	ASTM D 1000	2,9 N/mm
Permeability to radon gas	SP Swedish NT&RI	5,7 x 10 <sup>-12</sup> m <sup>2</sup> /s
Permeability to methane gas	CSI Method	<5 cc/m <sup>2</sup> x 24h x atm
Probe Tack	ASTM D 2979	7 N
Working temperature		+5°C / +45°C
Operating temperature		-40°C / +80°C
Fire class	EN 13501-1	E
Storage place		dry, protected from UV rays, +5°C / +40°C
Storage period		max. 12 months

\*MD = longitudinal CD = transversal

Riwega Srl is not responsible for negligent and improper use of its products