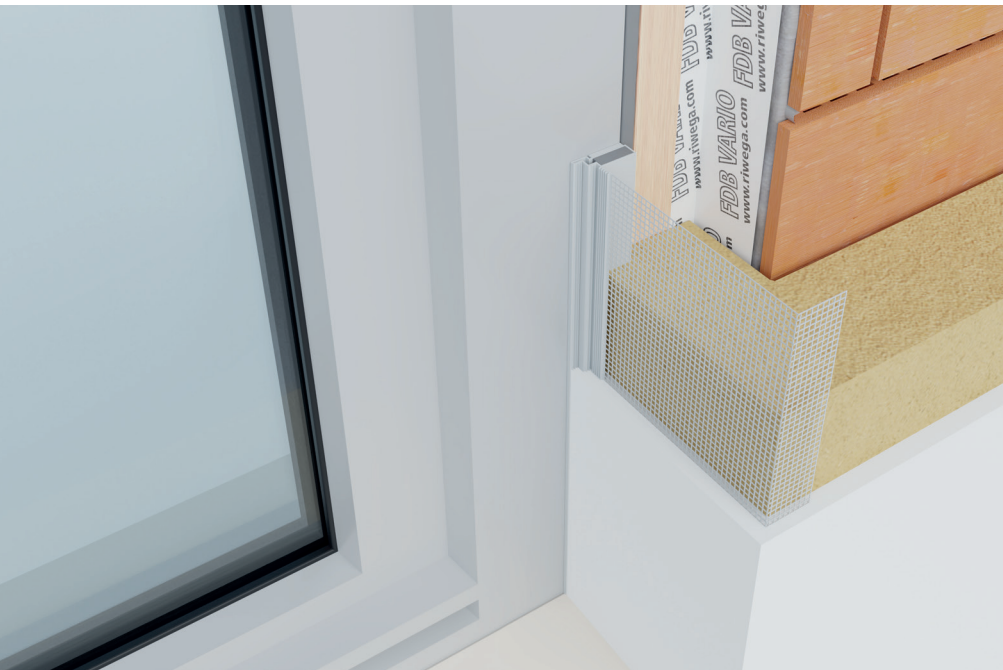


FDB Profile



QUICK OVERVIEW: STRENGTHS

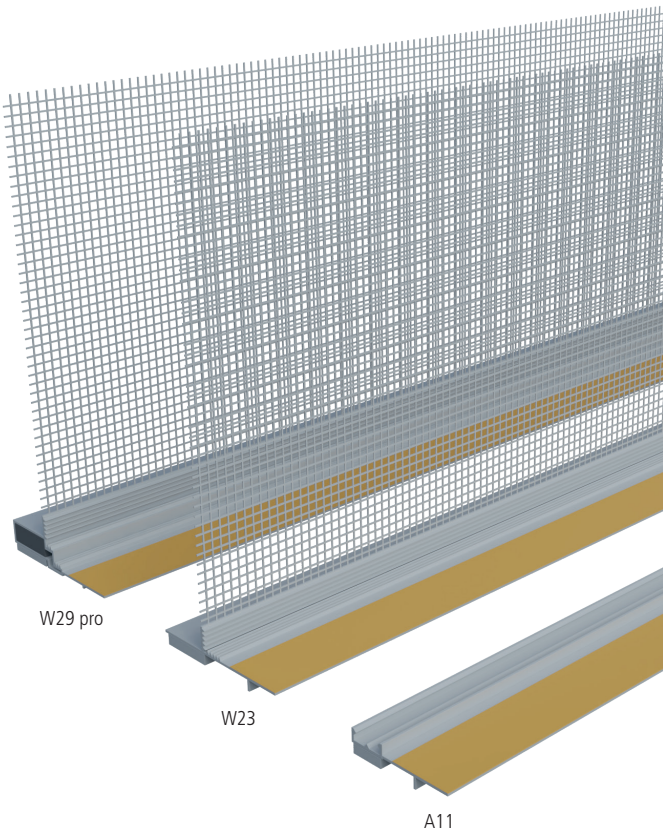
Windows and doors next to plasters

- Soffit profile
- Indoor and outdoor use, to connect the window to the thermal insulation system
- Self-adhesive, equipped with expanding tape and available in different types
- Air, water and wind tight joints on windows and doors

Features:



A11	
W23	
W29 pro	



Codes and measures

Version	Code	Material	Seal	Measures (cmxmm)	Thickness (mm)	L mesh (mm)	Dimension (mm)	Box (m)
A11	02046011	Plastic	PE	240x9	5	-	-	48
W23	02046023	Plastic	PE	240x18	6	250	4x4	60
W29 pro	02046029	Plastic	PE+PUR	240x25	10	125	4x4	60