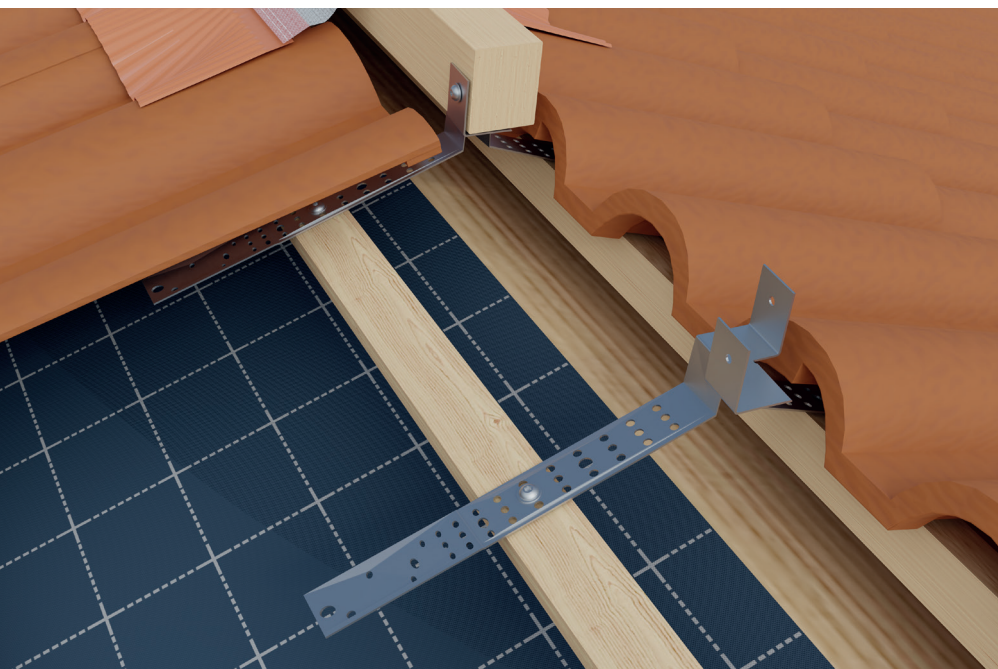


Batten support bracket



09

R1

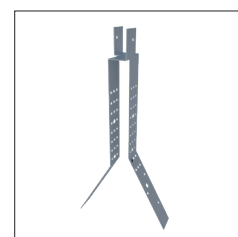
QUICK OVERVIEW: STRENGTHS

Essential for a correct ridge tile installation

- Metal batten support brackets
- Adaptable to all kinds of roof cover
- Can be used on all rigid supports (wood or concrete)
- Adjustable in height and available in different measures
- Guarantees stability of the roof covering without using any foam or mortar

Universal batten support bracket

Product	Height (mm)	Width (mm)	Code
Universal 30	220	30	01040130
Universal 40	220	40	01040140
Universal 50	220	50	01040150



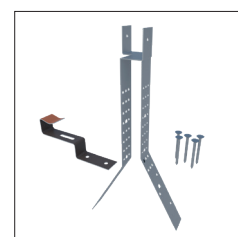
Nail-type batten support bracket

Product	Height (mm)	Width (mm)	Code
Nail-type 210/40	210	40	01040240
Nail-type 260/40	260	40	01040340
Nail-type 260/50	260	50	01040350
Nail-type 310/40	310	40	01040440
Nail-type 310/50	310	50	01040450



Kit "S" 57 / Kit "F"

Product	Content	Code
Kit S	30 hooks S57, 14 u. batten support brackets*, 200 nails**	01030140
Kit F	30 hooks F08, 14 u. batten support brackets*, 200 nails**	01030240



*Width = 40 mm; **2,8x35 mm

Riwega Srl is not responsible for negligent and improper use of its products