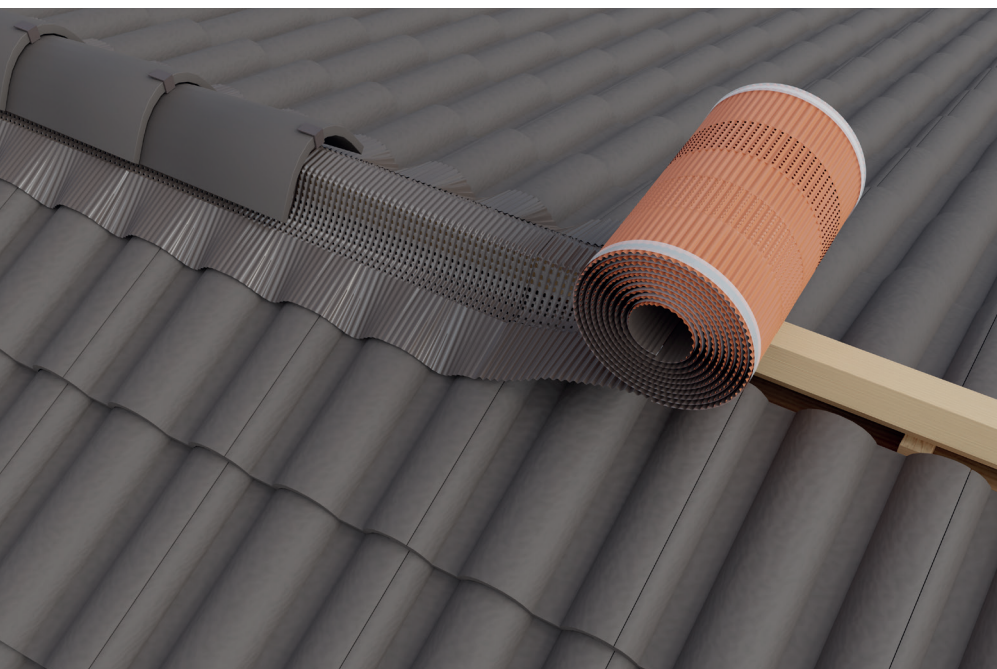


TIROLL Air

06

R1



QUICK OVERVIEW: STRENGTHS

Resistance is its main strength

- Under-ridge roll
- Completely made of metal (aluminium or copper)
- Resistant to water infiltrations and UV rays
- Completely water-resistant, also in case of broken tiles or if a tile is out of line
- Easily adaptable to every type of roof covering

Features:

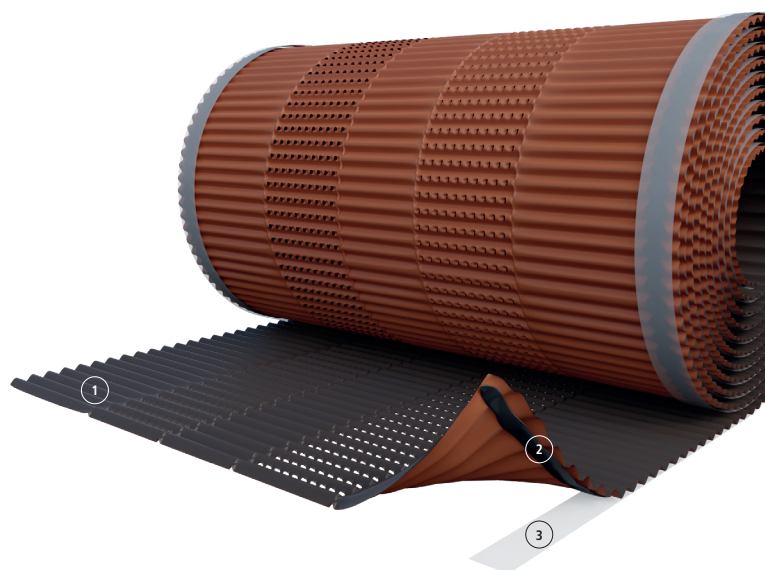


Technical data sheet

Material		alu / copper
Pre-folded edge		NO
Red / brown stripe		0,15 mm
Beige Antik stripe		0,12 mm
Copper stripe		0,10 mm
Roll length		5,00 m
Butylic glue red / brown / copper		90 g/m
Butylic glue beige Antik		60 g/m
Air flow (each side)	DIN 4108-3	>90 cm ² /m
UV rays stability		stable
Ageing resistance		resistant
Temperature resistance		-30°C / +90°C
Processing temperature		+5°C / +40°C
Alu / copper development		1,20%
Storage		dry, protected from UV rays, max. +30°C
Packaging		4 pc/box
Pallet		30 boxes

Codes and measures

Colours / Measures	320 mm	370 mm	400 mm
Red-brown	01014321	01014371	01014391
Brown	01014322	01014372	01014392
Beige Antik	-	01014376	-
Copper*	01016325	01016375	01016395



Composition:

- Aluminium / copper (1)
- Extruded butylic glue (2)
- Silicon liner (3)

*upon demand

Riwega Srl is not responsible for negligent and improper use of its products