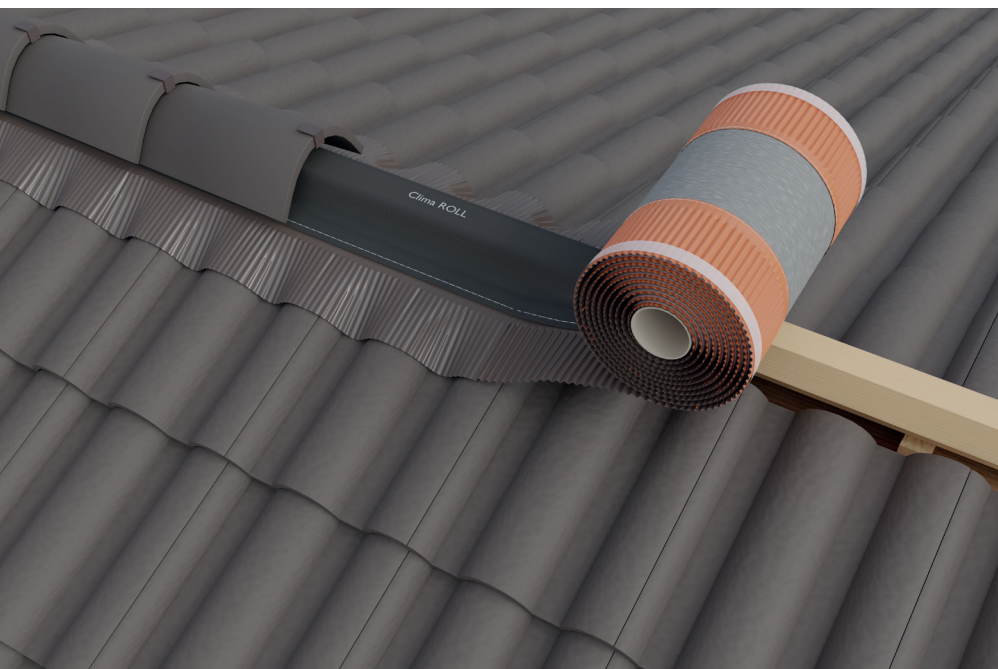


# Clima ROLL

02

R1



## QUICK OVERVIEW: STRENGTHS

### Double central protection

- Under-ridge roll
- Suitable for areas subject to very strong winds
- Resistant to water infiltrations and UV rays
- Easily adaptable to every type of roof covering
- Pre-folded Alu-edge to increase the mechanical resistance

### Features:

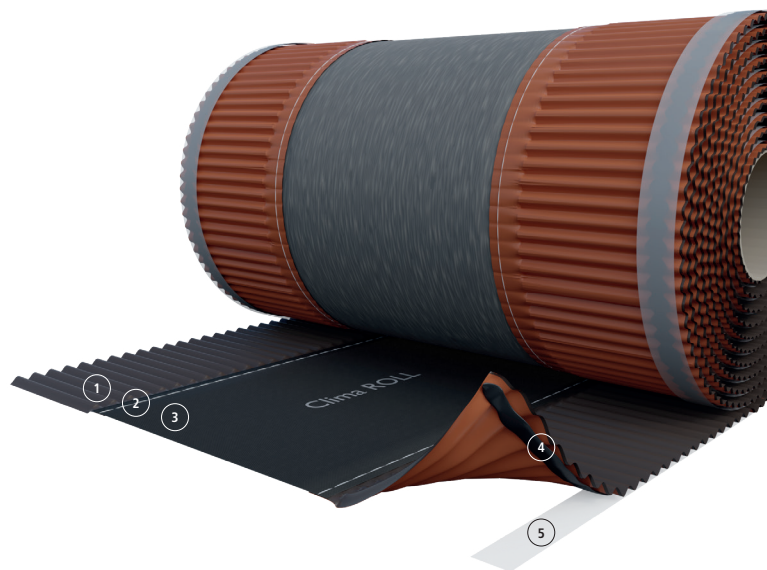


### Technical data sheet

Material		alu.TNT multilayer.alu
Pre-folded edge		YES
Aluminium stripe		0,15 mm
Roll length		5,00 m
Central fabric		multilayer fabric
Central stripe		NO
Material assembly		glue and seam
Extruded butylic glue		120 g/m
Air flow (each side)	DIN 4108-3	>90 cm <sup>2</sup> /m
UV rays stability		stable
Ageing resistance		resistant
Temperature resistance		-30°C / +70°C
Processing temperature		+5°C / +40°C
Alu development		1,35%
Storage		dry, protected from UV rays, max. +30°C
Packaging		4 pc/box
Pallet		30 boxes

### Codes and measures

Colours / Measures	310 mm	370 mm	400 mm
Red-brown	01013201	01013701	01013801
Brown	01013202	01013702	01013802
Black	01013203	01013703	-



### Composition:

- Aluminium with prefolded edge ①
- Seam ②
- Multilayer fabric ③
- Extruded butylic glue ④
- Silicon liner ⑤